

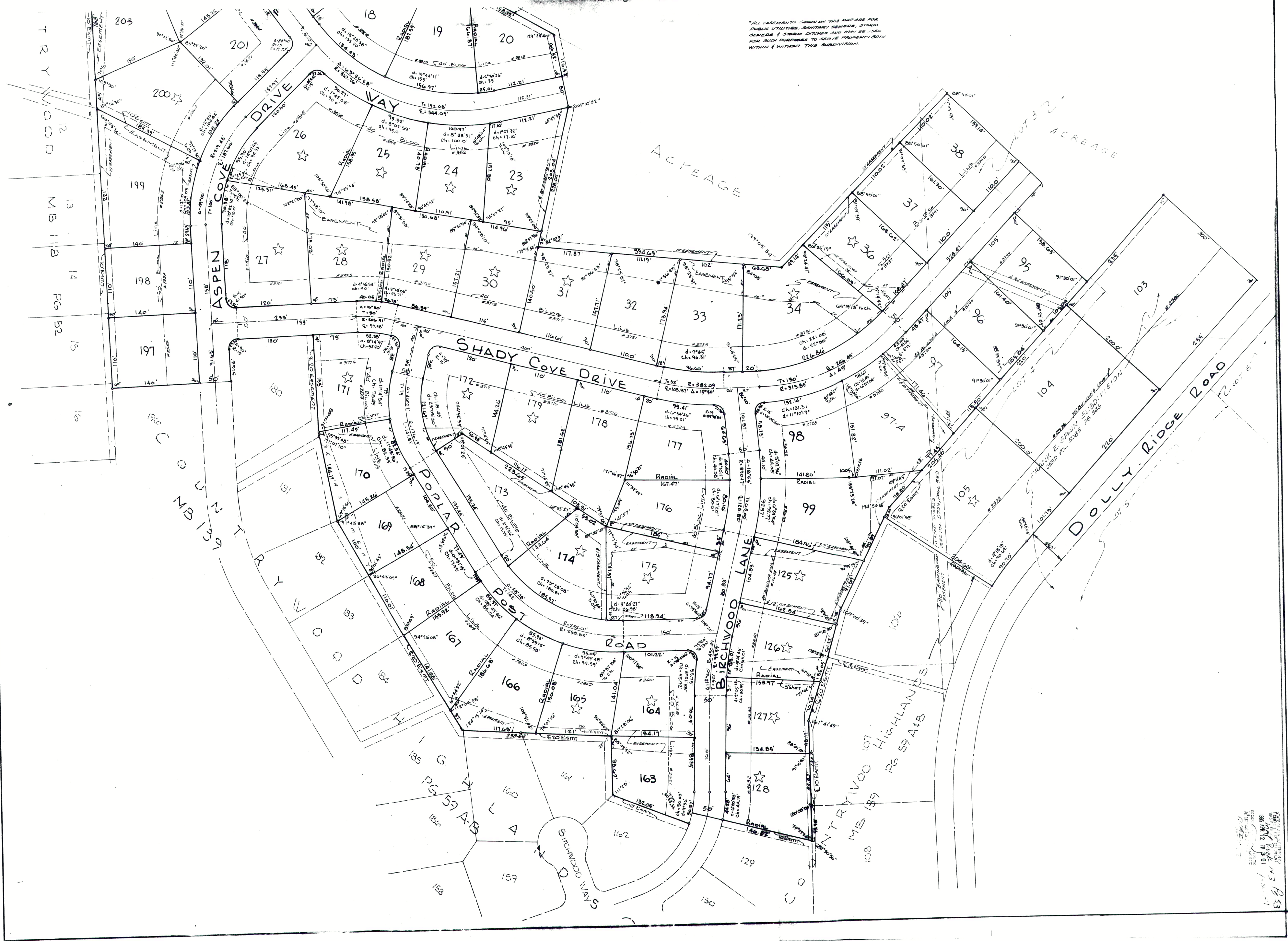
d=27 1986

For notation in this survey see Reg. 266 Page 614

O. H. FLORENCE Judge of Probate

PAY TO THE ORDER OF
AM SOUTH BANK, N.A.
460 BIRMINGHAM, ALA. 460
PROBATE COURT OF JEFFERSON COUNTY
O. H. FLORENCE, Judge of Probate

*ALL EASEMENTS SHOWN ON THIS MAP ARE FOR PUBLIC UTILITIES, SANITARY SEWERS, STORM SEWERS, STORM DITCHES AND WITH BE USED HEREIN FOR SUCH PURPOSES TO SERVE PROPERTY BOTH WITHIN & WITHOUT THIS SUBDIVISION.



O. H. FLORENCE
 Judge of Probate
 460 BIRMINGHAM, ALA. 460
 PROBATE COURT OF JEFFERSON COUNTY
 O. H. FLORENCE, Judge of Probate